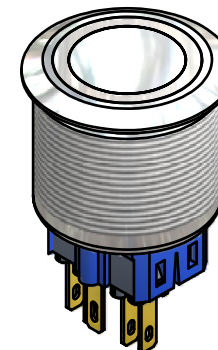
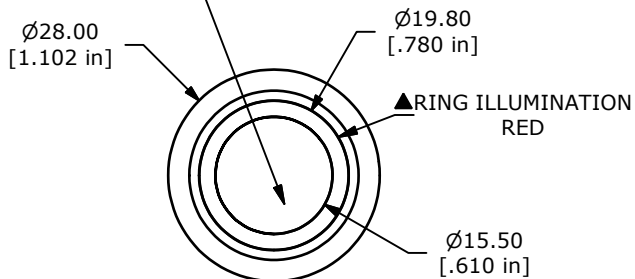
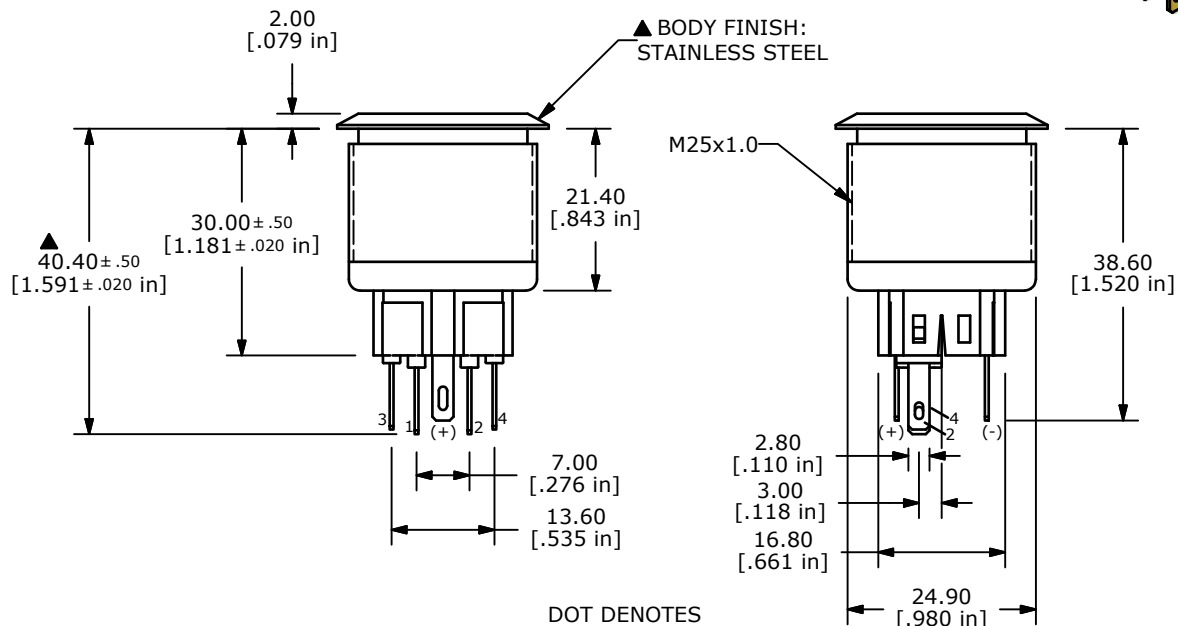
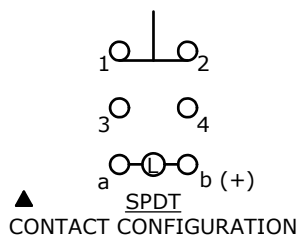


SWITCH FUNCTION	
POS. 1	POS. 2
1-2	3-4

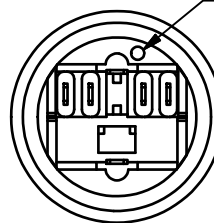
▲ACTUATOR FINISH:  
STAINLESS STEEL



PANEL CUTOUT  
MAX. PANEL THICKNESS 10mm



DOT DENOTES  
LED COLOR



- NOTE:
1. ALL DIMENSIONS IN MM [INCH]
  2. GENERAL TOLERANCE: X.X = ± 0.4  
X.XX = ± 0.25
  3. TERMINAL NOS. FOR REF. ONLY
  4. FUNCTION: SPDT
  5. RATING: 2A @ 48VDC
  6. ILLUMINATION VOLTAGE: 24 V
  7. CONTACT RESISTANCE: 50mΩ MAX. @ 1A 12VDC
  8. INSULATION RESISTANCE: 1,000MΩ @ 500VDC
  9. DIELECTRIC STRENGTH: 2,000VAC MIN. FOR 1 MINUTE
  10. ELECTRICAL LIFE: 50,000 CYCLES
  11. OPERATING TEMPERATURE: -20°C TO 70°C
  12. INGRESS PROTECTION: IP65
  13. SUPPLIED HARDWARE: O-RING AND HEXNUT
  13. ▲DENOTES CRITICAL PARAMETER
  13. 2002/95/EC (ROHS) COMPLIANT
  - ▲14. ILLUMINATION COLOR: RED (FORWARD), RED (REVERSE)



B	20417	ADD TERMINAL DIMENSIONS	01/20/12	BMA
A	20351	RELEASE FOR PRODUCTION	12/16/11	BMA
REV	PCR NO	DESCRIPTION	DATE	BY

TITLE PV8F2T0SS-315				
SCALE 1:1	DATE 12/16/2011	DR BMA	DWG 52-PV8F2T0SS315	REV B

THE INFORMATION CONTAINED IN THIS DOCUMENT IS PROPRIETARY TO E-SWITCH AND IS NOT TO BE COPIED OR TRANSFERRED